

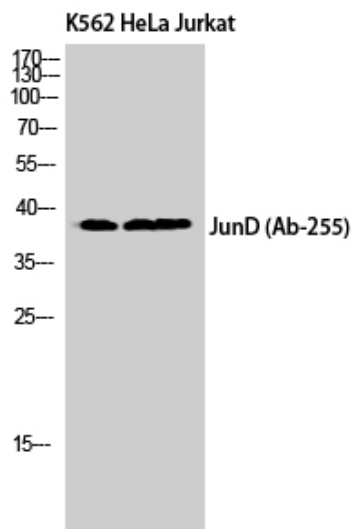


# Jun D Polyclonal Antibody

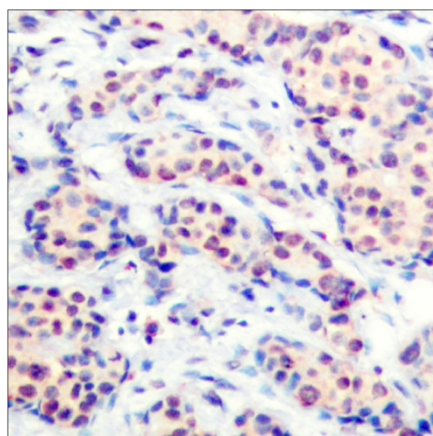
<b>Catalog No</b>	YP-Ab-01838
<b>Isotype</b>	IgG
<b>Reactivity</b>	Human;Mouse;Rat
<b>Applications</b>	WB;IHC;IF;IP;ELISA
<b>Gene Name</b>	JUND
<b>Protein Name</b>	Transcription factor jun-D
<b>Immunogen</b>	The antiserum was produced against synthesized peptide derived from human JunD. AA range:222-271
<b>Specificity</b>	Jun D Polyclonal Antibody detects endogenous levels of Jun D protein.
<b>Formulation</b>	Liquid in PBS containing 50% glycerol, 0.5% BSA and 0.02% sodium azide.
<b>Source</b>	Polyclonal, Rabbit,IgG
<b>Purification</b>	The antibody was affinity-purified from rabbit antiserum by affinity-chromatography using epitope-specific immunogen.
<b>Dilution</b>	WB: 1/500 - 1/2000. IHC: 1/100 - 1/300. Immunoprecipitation: 2-5 ug/mg lysate. ELISA: 1/20000.. IF 1:50-200
<b>Concentration</b>	1 mg/ml
<b>Purity</b>	≥90%
<b>Storage Stability</b>	-20°C/1 year
<b>Synonyms</b>	JUND; Transcription factor jun-D
<b>Observed Band</b>	38kD
<b>Cell Pathway</b>	Nucleus.
<b>Tissue Specificity</b>	Epithelium,Spleen,
<b>Function</b>	function: Binds an AP-1 site and upon cotransfection stimulates the activity of a promoter that bears an AP-1 site.,similarity: Belongs to the bZIP family. Jun subfamily.,similarity: Contains 1 bZIP domain.,subunit: Binds DNA as a dimer.,
<b>Background</b>	The protein encoded by this intronless gene is a member of the JUN family, and a functional component of the AP1 transcription factor complex. This protein has been proposed to protect cells from p53-dependent senescence and apoptosis. Alternative translation initiation site usage results in the production of different isoforms (PMID:12105216). [provided by RefSeq, Nov 2013],
<b>matters needing attention</b>	Avoid repeated freezing and thawing!
<b>Usage suggestions</b>	This product can be used in immunological reaction related experiments. For more information, please consult technical personnel.



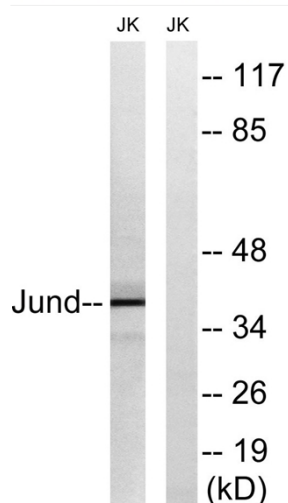
## Products Images



Western Blot analysis of K562 HeLa Jurkat cells using Jun D Polyclonal Antibody cells nucleus extracted by Minute TM Cytoplasmic and Nuclear Fractionation kit (SC-003, Inventbiotech, MN, USA).



Immunohistochemistry analysis of paraffin-embedded human breast carcinoma tissue, using JunD Antibody. The picture on the right is blocked with the synthesized peptide.



Western blot analysis of lysates from Jurkat cells, using JunD Antibody. The lane on the right is blocked with the synthesized peptide.